

TP3

Support: base ratchet

Objectives: Creating a stamping on a sheet metal part

procedure :

Access to the Sheet Metal Part Design Workbench

Choose the Mechanical Design -> Sheet Metal Design option from the Start menu. The Sheet Metal toolbar appears and is ready to use

Defining Sheet Metal Parameters

Click the Sheet Metal Settings icon



Come in **2mm** for the Thickness parameter. Come in **2.5mm** in the Bend Radius box. Click OK

Click the Sketch icon

and select the **xy-plane**.

edit the following sketch

fully constrain the part (symmetry and origin)

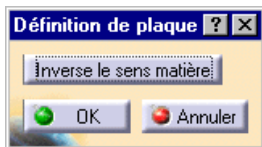
Click on the Exit sketch icon to return to the 3D universe.



Click on the Plate icon



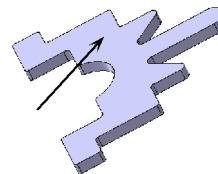
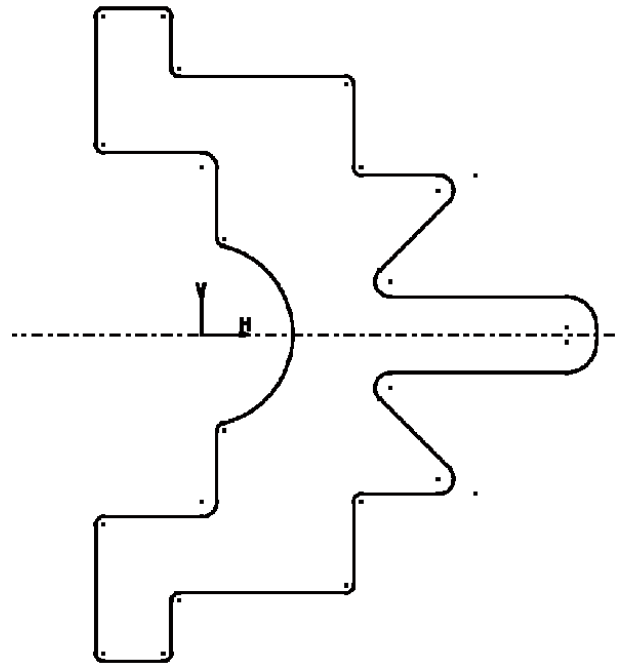
The Plate Definition dialog opens.



Click OK.

Creation of the stamping

Select icon **Round stamped** Select the top face marked with the arrow.

The dialog box **Definition of round stamping** displays default values.

modify the values indicated in the different zones:

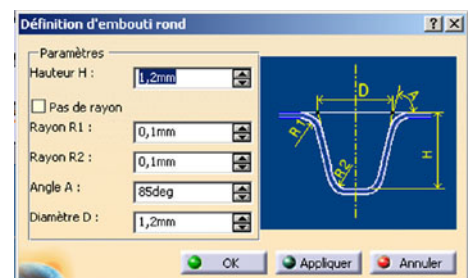
Height H = 1.2 mm

Radius R1 = 0.1 mm

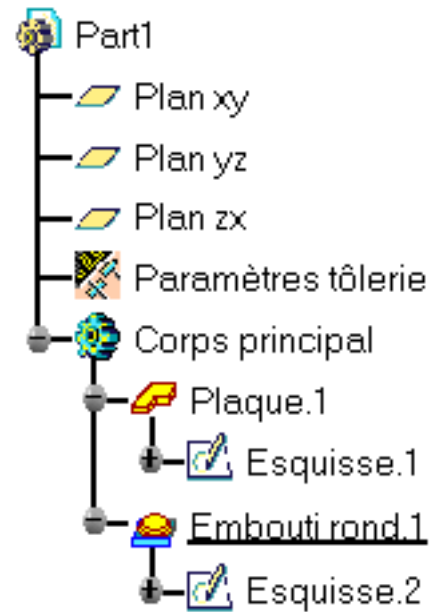
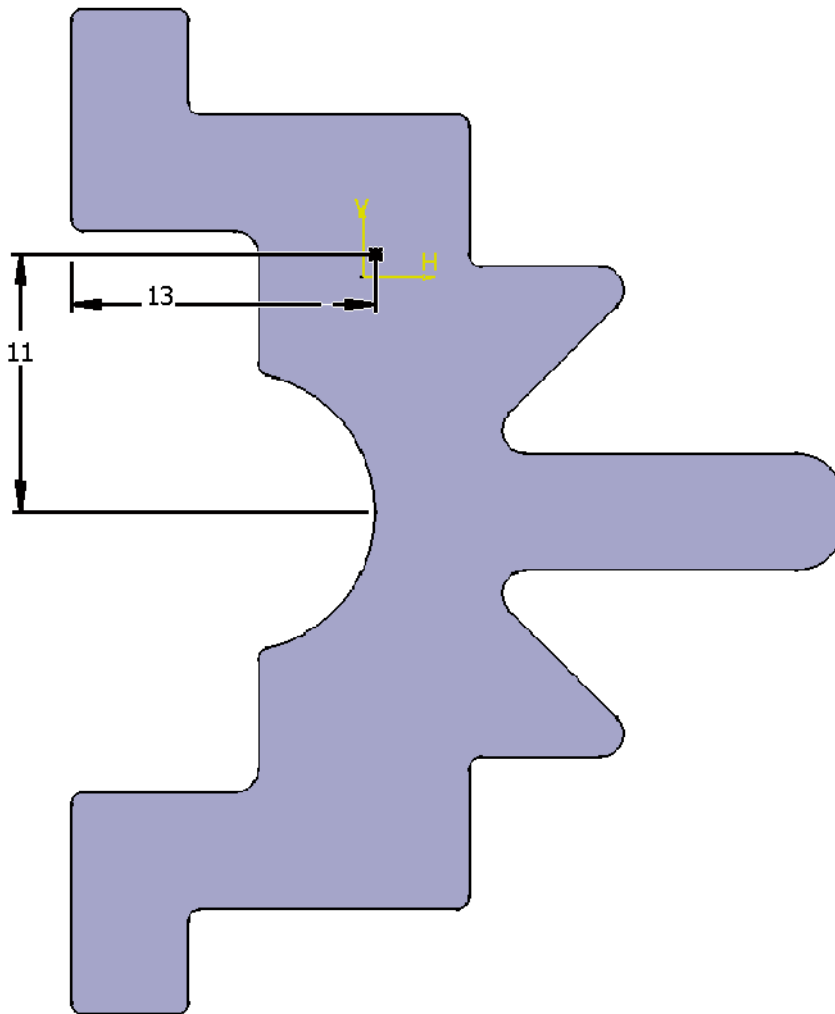
Radius R2 = 0.1 mm

Angle A = 85 deg

Diameter D = 1.2 mm

click **OK** to validate.

position of the round stamp double-click on sketch.2 in the tree dimension the point as in the figure



Click the Exit Sketch icon  to return to the 3D universe.

replicate the component using the rectangular grid 