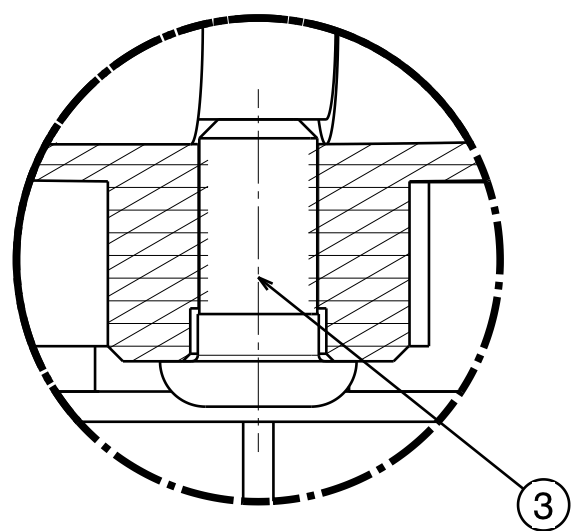
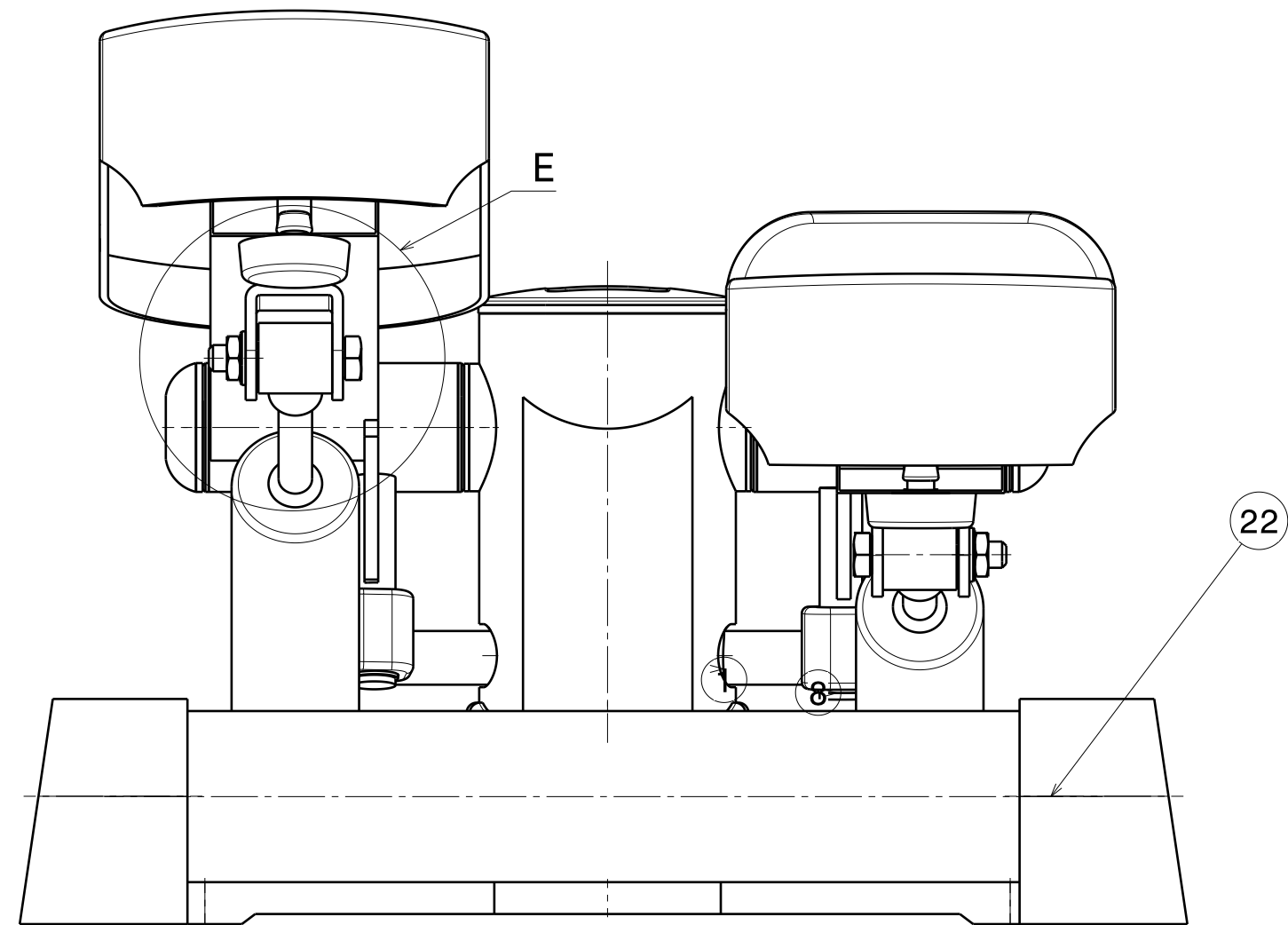
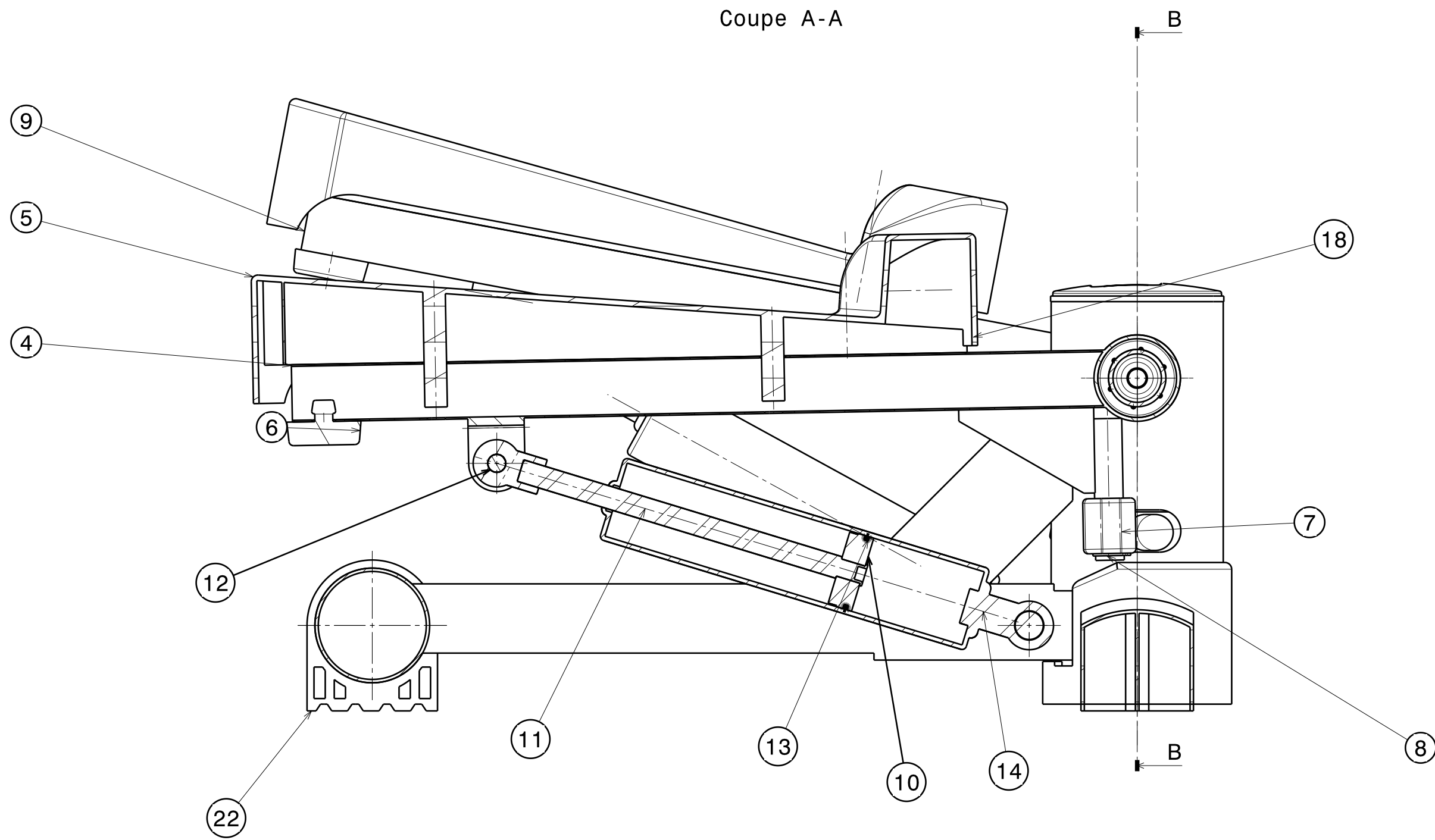
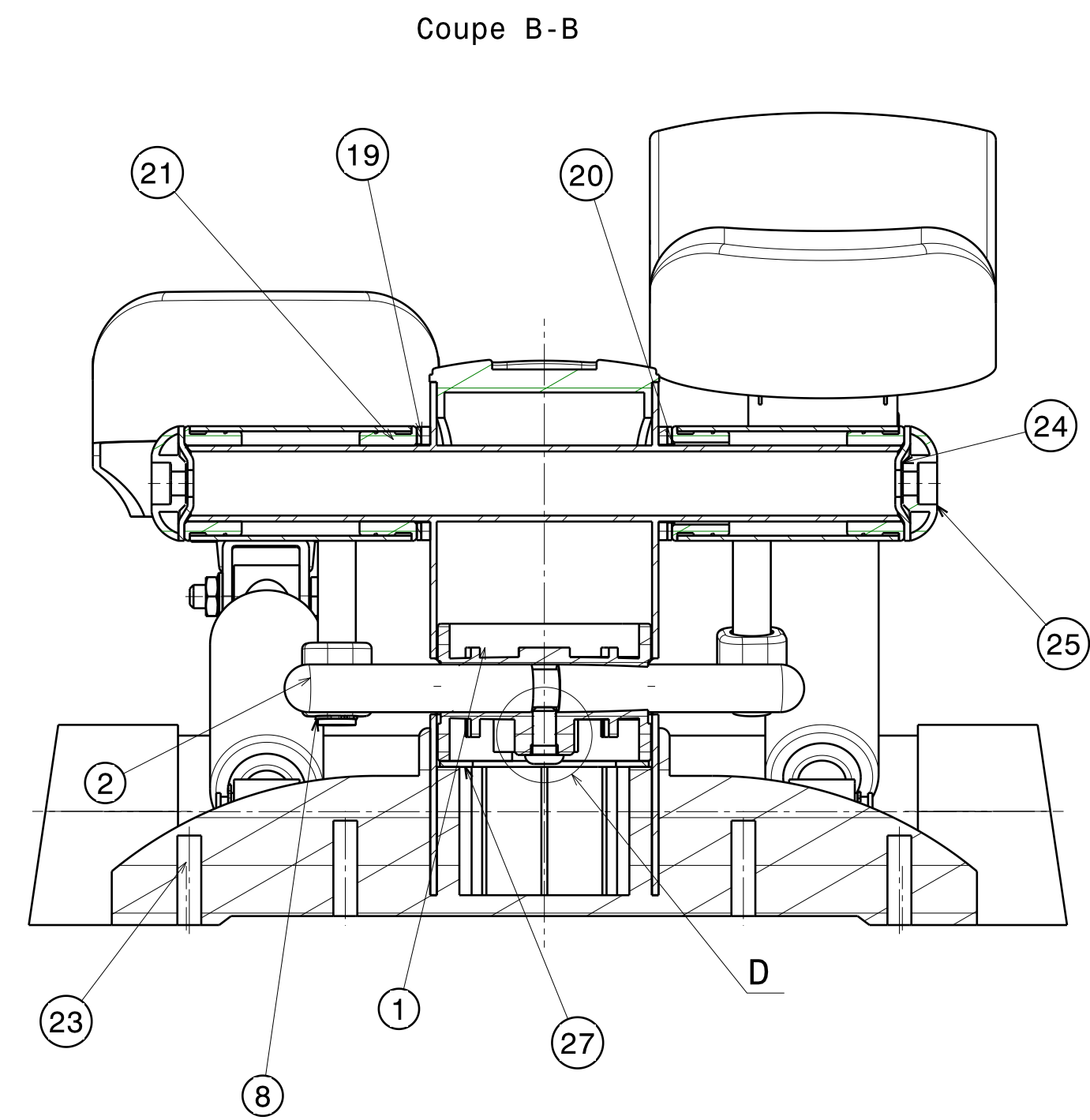


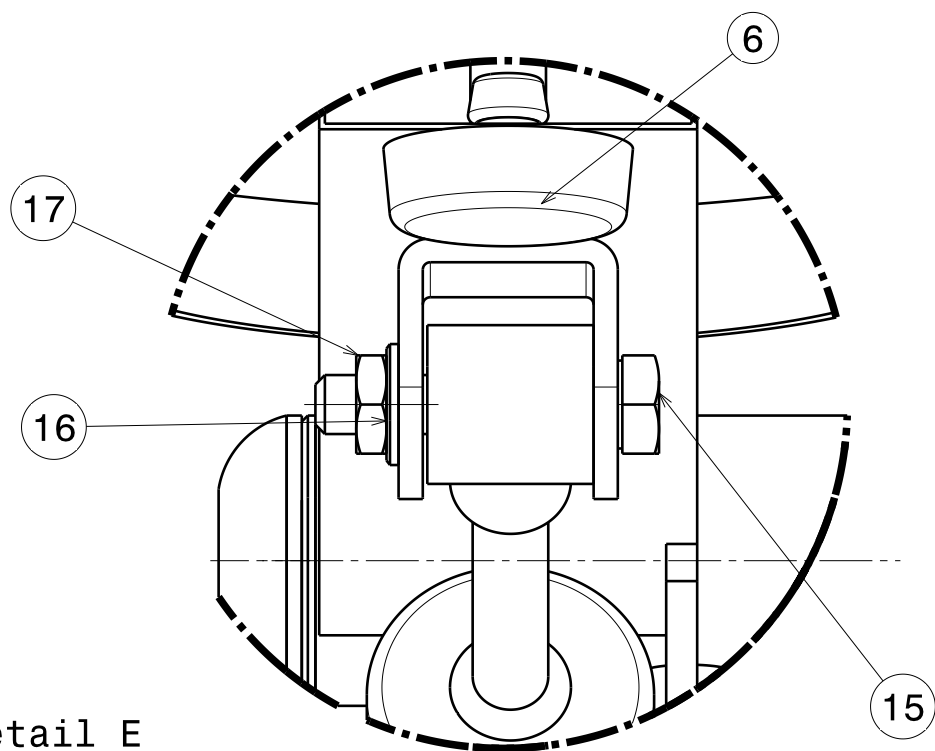
8
7
6
5
4
3
2
1

P O N M L K J I H G F E D C B A

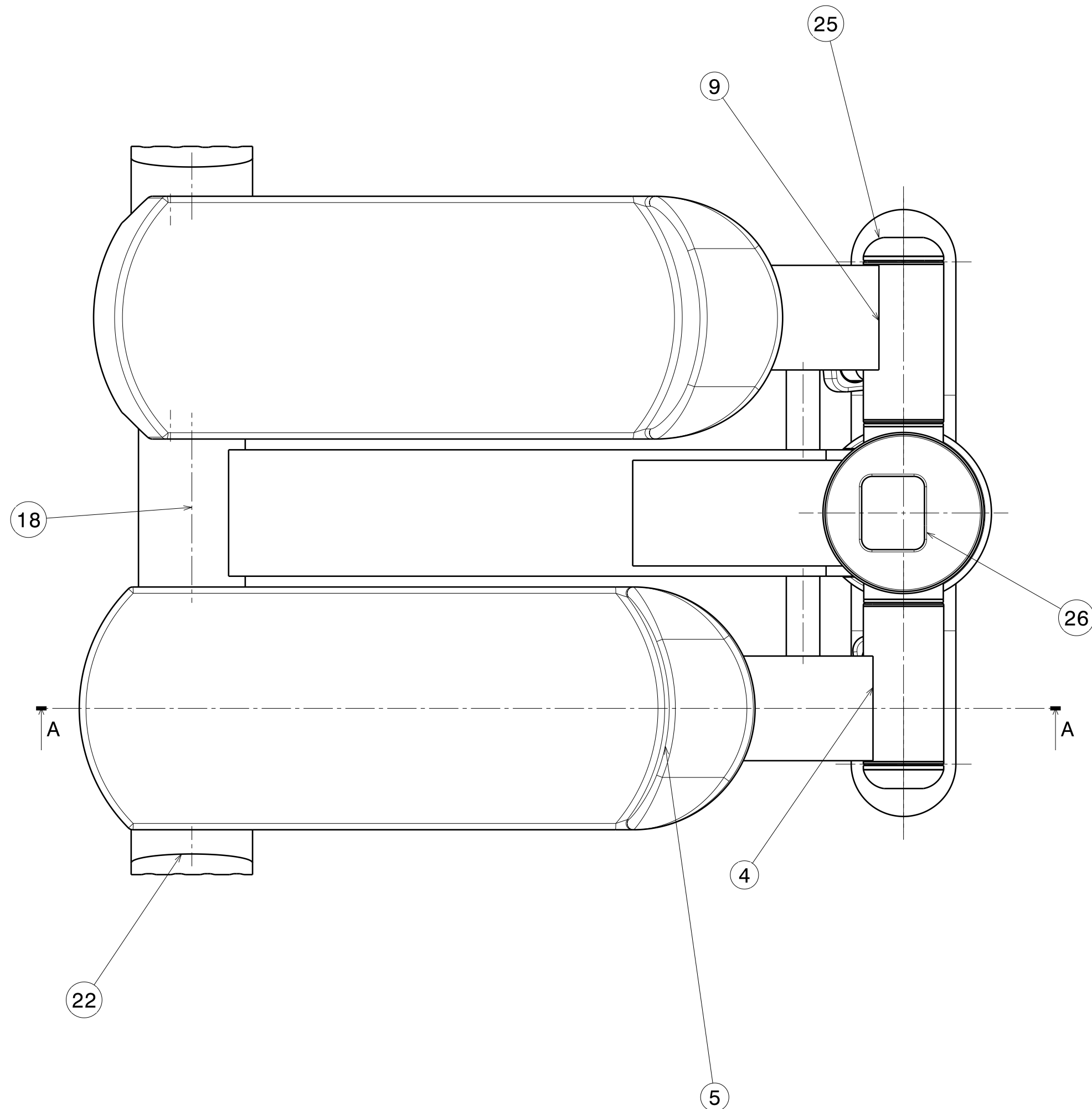
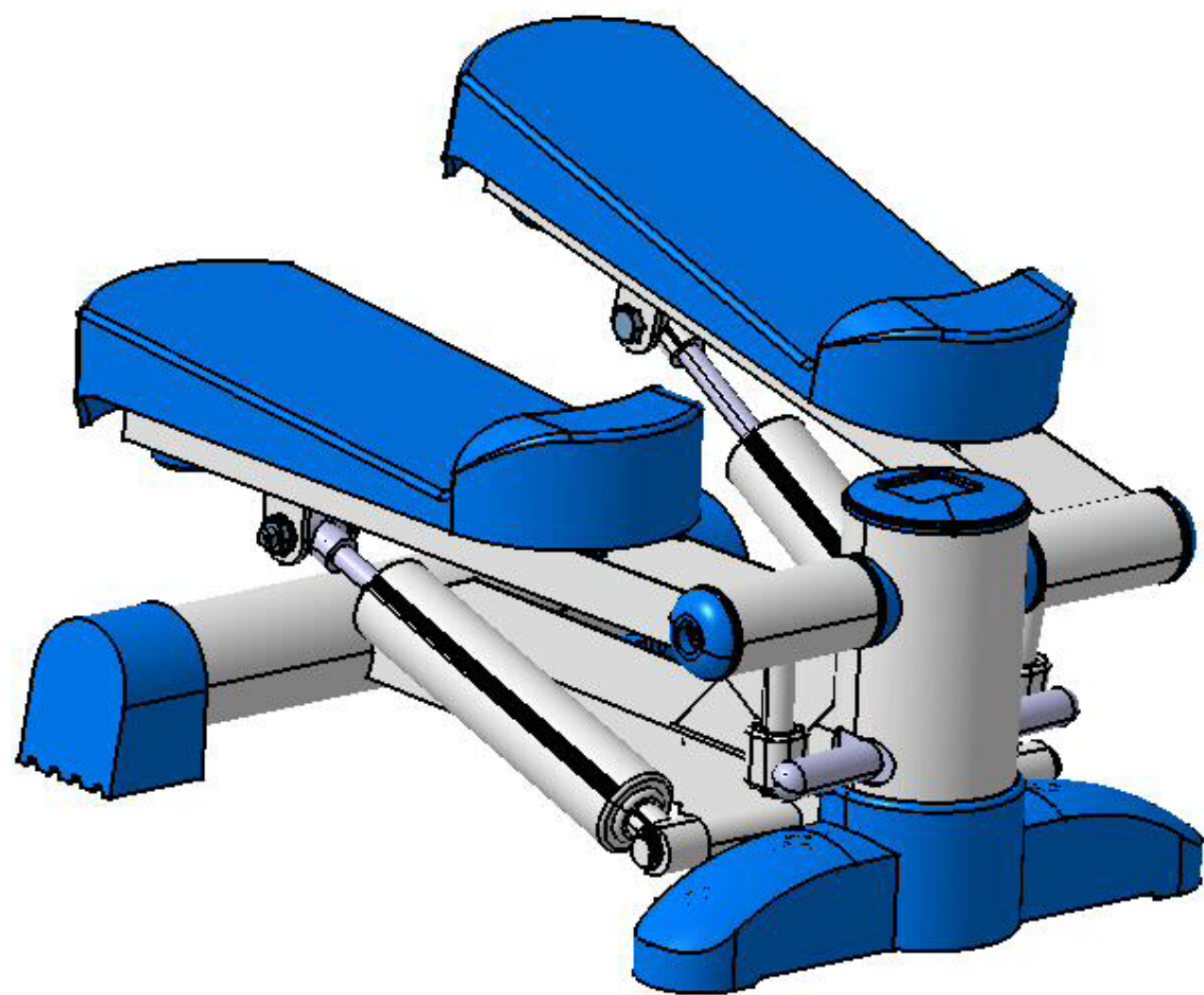
8
7
6
5
4
3
2
1



Détail D
Echelle : 2:1




Détail E
Echelle : 1:1



| | | |
|--------|----------|--|
| 17 | 2 | ISO 8675 NUT M8x1 STEEL GRADE C HEXAGON THIN METRIC FINE |
| 16 | 2 | ISO 7089 WASHER 8x16 STEEL GRADE A PLAIN NORMAL SERIES |
| 15 | 2 | ISO 4014 BOLT M8x40 STEEL GRADE A HEXAGON HEAD |
| 27 | 1 | rondelle_roulement |
| 14 | 2 | corps |
| 13 | 2 | joint |
| 12 | 2 | embout |
| 11 | 2 | tige |
| 10 | 2 | piston |
| 26 | 1 | compteur |
| 25 | 2 | cache_plastique |
| 24 | 2 | rondelle_pedale |
| 9 | 1 | support_pedale_gauche |
| 8 | 4 | anneau_elastique_pour_arbre - 12 - bs_3673 |
| 7 | 2 | amortisseur_parallelepipedique |
| 6 | 2 | Amortisseur_cylindrique |
| 5 | 2 | repose_pied |
| 4 | 1 | support_pedale_droite |
| 23 | 1 | pied_avant |
| 3 | 1 | ISO 4762 SCREW M8x16 STEEL HEXAGON SOCKET HEAD CAP |
| 2 | 1 | Axe |
| 1 | 1 | roulement_plastique |
| 22 | 2 | Pied_arriere |
| 21 | 4 | Entretoise |
| 20 | 2 | rondelle |
| 19 | 2 | entretoise_plastique |
| 18 | 1 | chassis |
| Numéro | Quantité | Référence |

Total des pièces : 49
Pièces différentes : 27
Récapitulatif sur mini_stepper

| | | | | |
|---|---|--------------------|---|---|
| DESIGNED BY: Administrateur | | Mini Stepper | I | — |
| DATE: 15/05/2003 | | | H | — |
| CHECKED BY: XXX | | | G | — |
| DATE: XXX | | | F | — |
| SIZE A1 |  | Lycee Louis Armand | E | — |
| SCALE 1:1 | WEIGHT (kg) XXX | | D | — |
| DRAWING NUMBER XXX | | | C | — |
| SHEET 1/1 | | | B | — |
| This drawing is our property; it can't be reproduced or communicated without our written agreement. | | | A | — |

P O N M L K J I H G F E D C B A